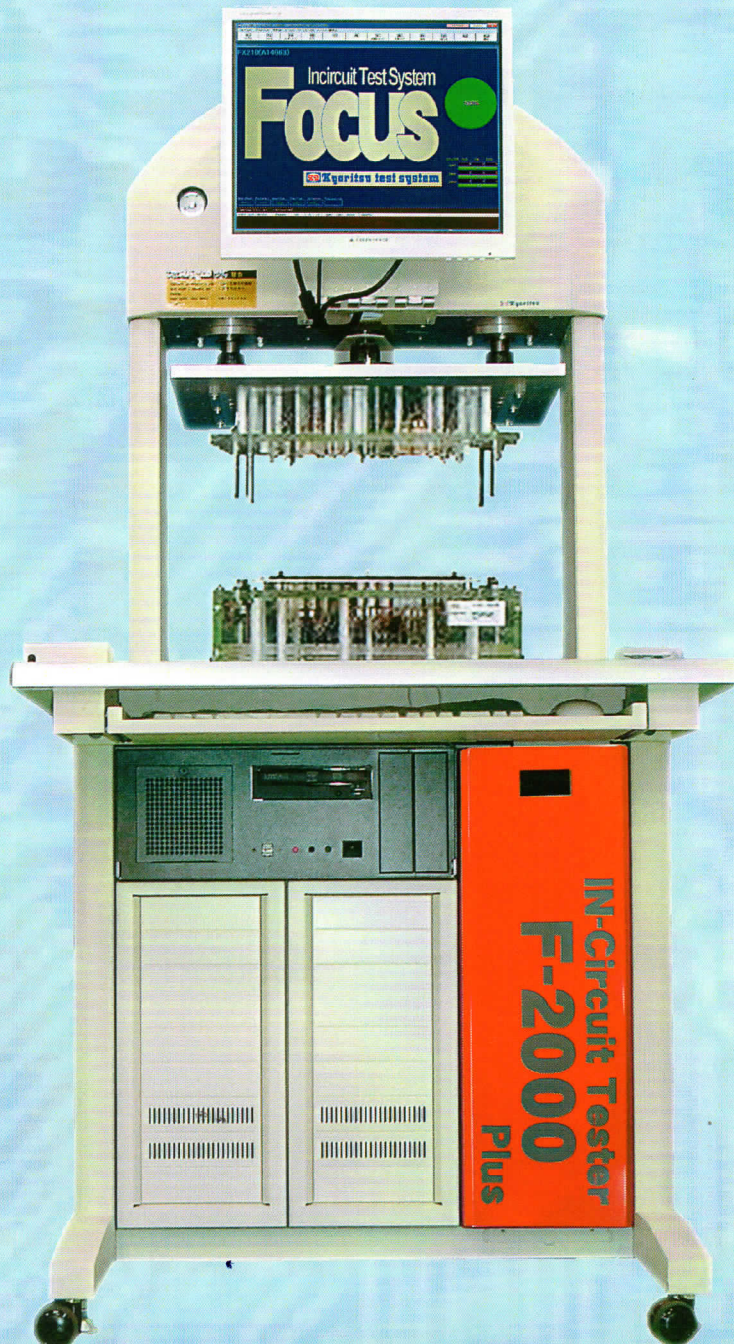


The New Feature Deployment Worlds Best Standard Tester

# IN-Circuit Tester Focus-2000 Plus



## Advanced Features

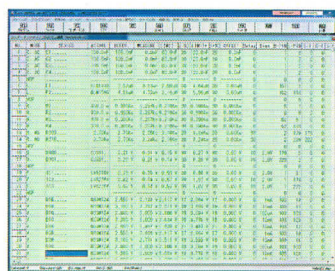
New Focus-2000 Plus achieved more compact measurement unit than before, by separating PC from measurement unit.

Introduction of new industrial PC realized more stable and high-speed measurement than ever.

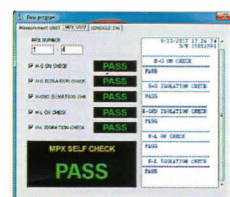
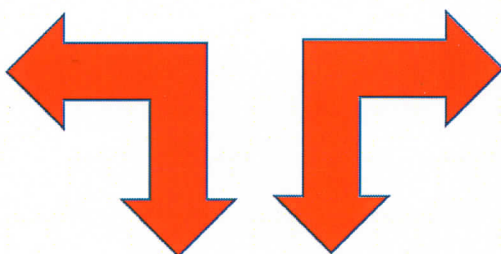
Due to direct controlling of measurement board by the industrial PC, processing time was dramatically shortened and MPX with low power consumption semi-conductor switch realized high-speed and less stress on measuring components.

Furthermore, this maintenance free MPX also materialized low cost and downtime zero operation.

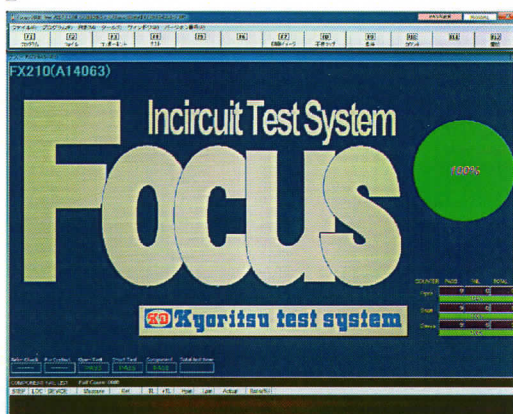
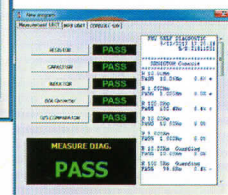
New Focus-2000 Plus with many varieties of features and other functions, such as debugging support, self-diagnosis, measurement data log, traceability, etc. is well accepted by various fields of customers and used with full satisfaction.



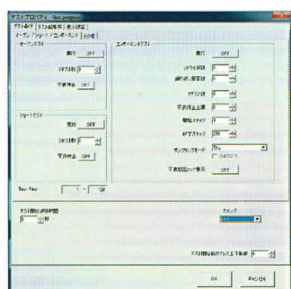
【Program Editing Screen】



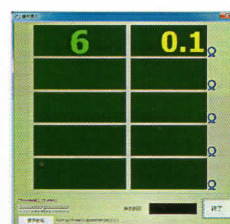
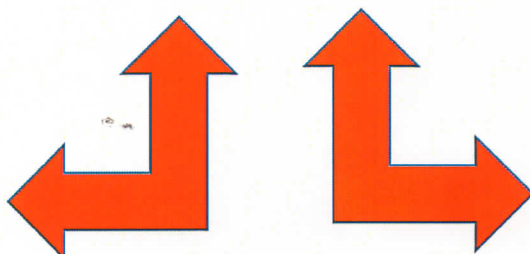
【Self-Diagnostics Screen】



【Testing Screen】



【Testing Configuration Screen】



【Pin Search & DMM Screen】

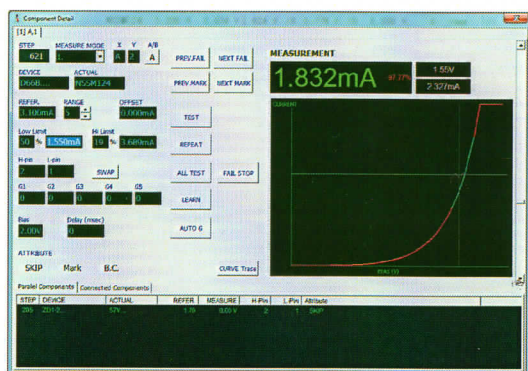


# Machine Specification

- ◆OS:Windows7(32bit)Professional Std.:English Option:Japanese  
Option OS:Windows10(32bit Applicable) NEW !
- ◆CPU:Intel Celeron G540
- ◆Monitor:TFT17' LCD
- ◆Printer:Thermal Printer
- ◆External Interface:RS232C×2/1GBps Ethernet/USB×8
- ◆Power Usage:AC100V~240V ±10%(50/60) Power Consumption:120VA
- ◆Air:0. 4~0. 6MPa(Dry Clean Air)
- ◆Environment Requirement:Temperature 10°C~30°C Humidity:30%~80%
- ◆Machine dimension & Weight:730mm×800mm×1540mm 130Kg

# Tester Specification

- ◆Test Point : 256 pins (Standard)~2048 pins (MAX)  
(1 board per128 pins extendable)
- ◆Short/Open Network Editable feature
- ◆Test Steps:Unlimited
- ◆Guarding :MAX 5 point MAX bias Current:20mA
- ◆Testing Time :S/O Test 1ms/pin Component Test 0. 75ms~
- ◆S/O Test Method to test by using good sample board value. Threshold are:5•20•80Ω
- ◆Resistance:0. 1Ω~40. 00MΩ 4 pins resistance measurement (Optional)
- ◆Capacitor:10. 0pF~40mF
- ◆Coil:10μH~40H
- ◆Diode:0. 1V~9. 9V
- ◆Digital Transistor:Operation Test
- ◆Photocoupler:Operation Test
- ◆Capacitor Reverse:PASS/FAIL
- ◆Constant Voltage biased Current measure:BIAS 0V~10V、0~10mA
- ◆Constant Current biased Voltage measure:BIAS 0V~10V、100nA/1μA/10μA/100μA/1mA/10mA
- ◆Constant Current biased Voltage Measure 【D.CCV】:BIAS 2μA~10000μA Reading Value 0.01V~9.99V



【Curve Trace Screen】

## Option Features

- ◆TestJET Deployable
- ◆Each function test applicable
- ◆Reading CPU ROM data applicable
- ◆Boundary Scan applicable
- ◆4 pins measurement resistance measure applicable
- ◆High Voltage testing applicable
- ◆2 dimension code(QR, DMC etc.) applicable
- ◆SQL database server access applicable
- ◆Electric Press Unit applicable

The leading test technology . . .

**KD Kyoritsu Test System**



<http://www.testsystem.co.jp>



ISO9001

Kyoritsu Test System was audited by ASR  
and acquired the certification of the ISO 9001.

The leading test technology...

**KD Kyoritsu Test System**

Sagamihara Branch  
 4-3-11 Onodai, Minami-ku, Sagamihara-shi, Kanagawa  
 Japan 252-0331  
 TEL : +81 42 730 9044 FAX : +81 042 757 7740