

Selective Soldering Machine

QUICK W5050-S | W5050-2S | W5050-2S+



Features

- Standard In-line machine, single-pot and double-pot optional.
- Suitable for 508*508mm extra-large PCB production.
- Suitable for mass production of a single model.
- Fast programming, drawing soldering tracks based on pictures, simple and efficient.
- Intelligent vision system, automatic scanning, point identification and correction, fool proof design.
- Flux flow monitoring, liquid level monitoring, with a minimum coating width of 2mm, reduce PCB ion pollution.
- Online monitoring of preheating temperature, independent monitoring by the third party, safe and stable implementation of the heating system.
- Soldering temperature monitoring, wave peak monitoring, nitrogen protection during the whole soldering process, greatly improve the wettability and ensure the quality of soldering joints.
- Electromagnetic pump used, constant flow, constant temperature, stable wave height, no mechanical moving parts and free maintenance.

Specifications

Model	QUICK W5050	
Machine Parameters	Moving range(effective)	500*500mm
	Functional area	W5050-S single pot, W5050-2S double pot with single Z axis W5050-2S+double pot with double Z axis
	Voltage	Three phase 380V、50Hz/MAX Power 28KW
	Air pressure	Compressed air ≥ 0.6 MPa/N $2 \geq 0.3$ mpa
	Max outer dimensions(WxDxH mm)	2530*1750*1600(exclude light house and PC etc)
	Total weight	About 1500Kg
	Communication mode with upper and lower stations	SMEMA
Conveyor Parameters	Upper conveyor height	900 \pm 50mm
	Clearance height above the product	100mm
	Clearance height below the product	60mm
	Conveyor width	70-508mm
Conveyor Parameters	Jetting control mode	Micro jetting (spot jetting / line jetting)
	Jetting CCD alignment system	Automatic recognition of mark points for position compensation
	Preheating method	Infrared, Hot air
	Pump type	Electromagnetic pump
	Solder wave height(mm)	0-5mm
	Solder wave height measurement	Automatic detection
	Solder pot capacity(kg)	13kg
	Solder pot max temperature($^{\circ}$ C)	$\leq 330^{\circ}$ C
	Soldering process monitoring system	With CCD real-time display
	Programming mode	Online programming through pictures or Gerber, or offline programming / CCD scanning programming

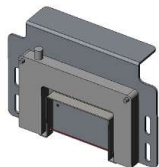
Options



Automatic solder adding module



Optional reflow conveyor module(full size 70-400mm)

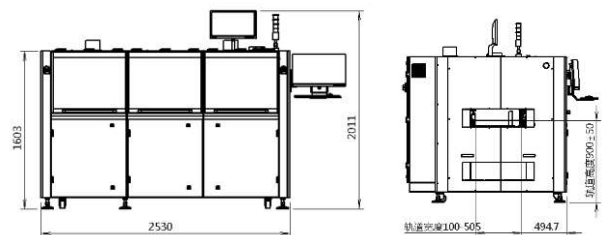


Flux flow monitoring module



Heavy-duty conveyor module (20kg)

Outer dimensions



Support MES system

