

FLUKE®

**Process
Instruments**

Reflow Tracker®

The Profiling Solution for the Electronics Assembly Industry



Robust

Versatile

Intuitive

Datapaq® Reflow Tracker® System



LOWEST COST OF USE

- Available in 6 and 12 channel configurations, with logger height as low as 11.7 mm (0.46 in) and as narrow as 57 mm (2.24 in) – choose the unit to fit your process.
- Packaged in an aluminum case and with conformally coated electronics the Datapaq DP5 is designed to survive harsh environments.
- Communication with PC is via standard USB A to mini B cable – no more expensive custom communication cables.
- Rechargeable from flat in 90 minutes, from any USB outlet or even a power bank.
- Slow charge from PC maximizes battery charge – ensures system is always ready for use.
- Up to 50,000 readings per channel and multi-profile capability before download – multiple ovens can be profiled back to back, with no PC download needed for each profile.
- Bluetooth communication provides instant cable free download of the results – saves time and reduces complexity.

**The robust, versatile and intuitive solution
... saving you time and money**

The first Datapaq profilers were supplied in 1984, always designed to provide the complete solution in the harshest of environments. Datapaq systems have become the temperature profiler of choice in all industries from food cooking through coating curing, electronics assembly to metal heat treatment and ceramics firing. Now part of Fluke Process Instruments the latest generation profiler, the Datapaq DP5, continues the tradition whilst at the same time making use of the latest technology to improve ease of use and reduce the cost of ownership.

Datapaq DP5 Data Loggers

The most advanced and versatile family of Datapaq loggers from Fluke Process Instruments

Whether you need low height, an incredibly narrow footprint, or up to 12 channels with rapid sampling, a Datapaq DP5 logger is your best choice. Housed in a machined aluminum case and fully conformally coated, the Datapaq DP5 loggers will provide years of reliable profiling.

- Ultra-fast USB connection
- Small footprint: less than 57 mm (2.5 in) wide, 11.7 mm (0.5 in) high
- Rapid charging

The user replaceable high temperature NiMH battery charges from flat to usable in just five minutes. A full charge takes only 90 minutes and can provide 20 profile runs. That eliminates daily recharging and the need to store batteries. And with 'hot data' protection, data cannot be accidentally erased before downloading.

Thermal Barrier Range

Widest choice of sizes for the electronics industry

30 years of design experience in processes of up to 1,100°C has resulted in the class leading thermal protection for the electronics industry.

The widest range of thermal barriers in the industry means there is a system to match your process and oven.

The most effective insulation available is combined with a stainless steel case and dual latch locks, ensuring maximum thermal protection in a robust lightweight package.

Open-flat design enables rapid cooling and fastest possible reuse.

Insight Software

Flexibility with ease of use

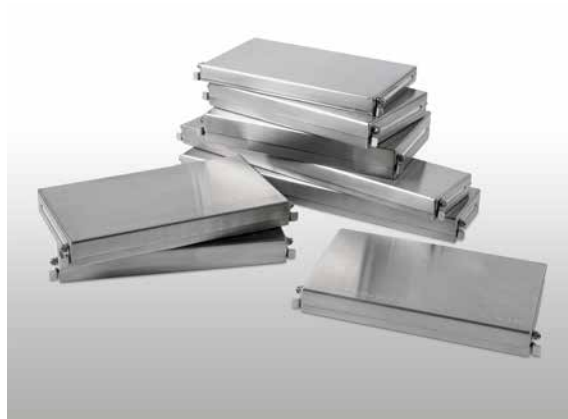
All of the variants of the Reflow Insight software benefit from an intuitive user interface, with wizards to guide the infrequent user if needed.

A single screen presents the full results for the reflow or wave profile with alarms to indicate any out of limits results — so no time is wasted when analysing the data.

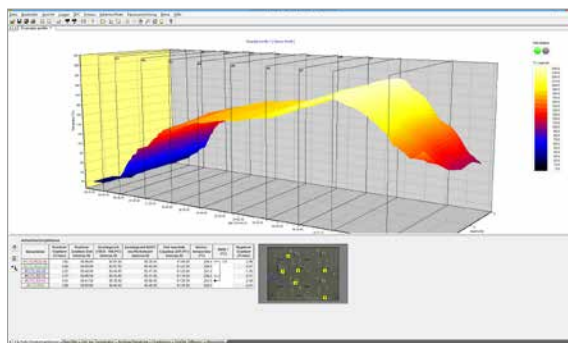
Included in Reflow Insight is the Easy Oven Set up (EOS) recipe calculation tool. EOS automatically calculates and informs the user of the optimum oven settings for a given product — saving time at every new product introduction.



Datapaq DP5 data loggers



Thermal barriers



Insight software

The Reflow Insight Professional software includes the EOS tool and adds process profiling capability with the addition of the Surveyor functionality. Adding the Surveyor adjustable frame and sensors* will provide an easy to use process monitoring tool that measures oven stability at the product level. This enables unskilled operators to obtain consistent data quickly, easily and repeatably, the basis for all statistical analysis.

* An extra cost optional feature

The Reflow Tracker system can be used to monitor the full range of soldering processes including:

Wave soldering – with the CS5006 and CS5012 wave pallets, offering up to 9 contact sensors and 3 preheat sensors, the Reflow Tracker system offers a low cost process monitoring solution for all wave soldering applications. The software transforms the raw temperature readings into actionable data including contact times and parallelism.

Selective soldering – used to measure either product temperature via thermocouples or process stability using the unique PA2200 selective soldering sensor the reflow tracker is small enough to fit in many selective soldering processes.

Vacuum soldering – increasingly used to reduce voids in the joints. The small size and low thermal mass of the thermal barriers means the Reflow Tracker system can be used in most vacuum soldering ovens. With radio telemetry, real time data from within the sealed chamber, can be processed and analyzed.

Vapour phase soldering – a range of sealed and lighter weight thermal barriers enable users to profile this process with minimal process disturbance.

Rework stations – the ability to monitor at high speed in real time, either via the USB cable or Bluetooth connection, ensures the Datapaq DP5 is the ideal solution for monitoring rework stations of any type.

Radio telemetry provides reliable real time data

The Datapaq DP5 data logger can be specified with the optional TM21 radio telemetry system. This system has been designed specifically for use in high temperature conditions and providing the temperature readings in real time has proven its value in application from food cooking to steel slab reheating.



Datapaq DP5 data logger in thermal barrier

The Fluke Process Instruments Guarantee

Each Fluke Process Instruments system is supported with a full one year warranty. Service contracts available: Complementing the warranty, we offer a yearly service and recalibration contract, which includes free software updates and loan equipment for guaranteed peace of mind.

Fluke Process Instruments

Americas

Salem, NH USA
Tel: +1 603 446 6780
sales@flukeprocessinstruments.com

EMEA

Cambridge, UK
Tel: +44 1223 652 400
sales@flukeprocessinstruments.co.uk

China

Beijing, China
Tel: +86 10 6438 4691
sales@flukeprocessinstruments.com.cn

Asia East and South

India Tel: +91 22 2920 7691
Singapore Tel: +65 6799 5596
sales.asia@flukeprocessinstruments.com

Worldwide Service

Fluke Process Instruments offers services, including repair and calibration. For more information, contact your local office.

www.flukeprocessinstruments.com

© 2018 Fluke Process Instruments
Specifications subject to change without notice.
5/2018 Bro_Reflow_Tracker_EN_Rev A

