

# Selective Soldering Machine

## QUICK W2020



### Features:

- Compact design with flux spray, top hot air and bottom N2 preheating and single pot soldering modules inside.
- Max PCB size 405\*405mm.
- Be suitable for multi-products and small batch production.
- Software operation friendly, soldering paths set on basis of pictures, easy and high efficiency.
- Flux flow and liquid level monitoring, minimum spraying width 2mm, reducing PCB ion pollution.
- Preheating temperature online system monitoring and independent monitoring by a third party, ensuring the safe and stable implementation of the heating system.
- Soldering temperature monitoring, wave peak monitoring, nitrogen protection in the whole process, which can improve wettability and lead to reliable soldering quality.
- Electromagnetic pump, constant flow and temperature, stable peak height, no mechanical moving parts, maintenance-free.

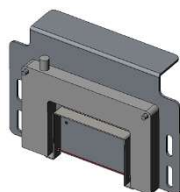
### Specifications

Model	QUICK W2020	
Machine Specifications	Moving Range	400*400mm
	Pot Option	Single pot + Single flux spray + Top hot air preheating + Bottom N2 preheating
	Power Supply	1-Phase 220V, 50Hz/MAX power consumption 8KW
	Air Supply	Compressed air $\geq 0.6\text{MPa}$ / $N_2 \geq 0.3\text{mpa}$
	Overall Dimension(W x D x H)mm	950*1650*1600( $\geq 0.6\text{MPa}$ / $N_2 \geq 0.3\text{mpa}$ 6120*1750*1600(w/o lighthouse and PC etc.)
	Weight	Around 750Kg
Conveyor Specifications	Communication with Up and Down machines	SMEMA standards
	Upper Conveyor Height	900 $\pm$ 50mm
	Net Space Above Product	100mm
	Net Space Below Product	60mm
	Width	70-405mm
Flux, Preheating and Soldering Specifications	Flux Spray Method	Micro pot spray(both dot and line available)
	Preheating Method	Top hot air and bottom N2 preheating
	Pump	Electromagnetic
	Wave Height(mm)	0-5mm
	Wave Height Measurement	Automatic
	Tin Pot Capacity(kg)	13kg
	Max Temp of Tin Pot( $^{\circ}\text{C}$ )	$\leq 330^{\circ}\text{C}$
	Soldering Monitoring	CCD, real time display of soldering process
Programming Method		Online programming via pictures or Gerber files or offline programming

### Optional Accessories



Automatic tin feeding module

Lower conveyor width adjustable module  
(overall dimension 70-400mm)

Flux flow monitoring module



Track load module (20kg)

### Overall Dimension

