

XSDR 702-24



Reset Cabinet



Outstanding performance

The XSDR series has an outstanding performance for drying moisture sensitive components and pcb's.

The dynamic drying unit of the 2000 series reaches very reliable low humidity values of $\leq 0,5\%RH$ and automatically regenerates if necessary.

As a result of an insulated double metal sandwich construction a precise temperature of $60^{\circ}C$ can be reached with a very low power consumption.

A radial fan and heater supports the drying process and realizes an equable temperature and moisture level in the cabinet. The relevant process data is obtained by use of an accurate Rotronic sensor.

10 timers for each chamber helps you resetting the floor lifetime of your MSL components.



XSDR 702-24

Standard features

✓ User friendly handling	Two touchscreen displays with easy menu structure to configure each compartment separately
✓ ESD features	Norm (IEC 61340-5-1) ESD stainless steel body (<10 ³ Ohm/sq) Conductive glazing (in- and outside 10 ³ Ohm/sq)
✓ Insulation	60 mm sandwich construction with Polyurethane
✓ Online functionality	Interface and data logging through standard Ethernet interface Compatible with new MSL 2.0 software
✓ Interior lighting	Low power consumption LED lighting
✓ Door & humidity alarm buzzer	Longer door openings are detected, high RH levels are detected
✓ Leveling out	Adjustable legs
✓ Lockable doors	Every door can be locked separately with a key
✓ Sliding shelves	In height adjustable sliding shelves on metal rollers (4 pcs)
✓ Drying unit	U-2000 series drying units, ≤1% RH (2 pcs)
✓ Rotronic sensor	Precision sensor, accuracy +/- 0,8 % RH, +/- 0,3°C (2 pcs)
✓ Power supply	Power cord 5 meter with IEC plug

Benefits

✓ Drying time (see reference table)	Fast drying time, Level 3 component, <1,4 mm = 18 hours (60°C / 1% RH)
✓ Recovery time after door opening	< 15 minutes to below 1%
✓ Temperature stability	The same temperature level throughout the drying cabinet as a result of the use of a radial fan in combination with ventilation and heating in an insulated sandwich construction
✓ Temperature setting	Heating up to 60°C, accuracy +/- 2°C
✓ Energy saving consumption	As a result of a Dynamic dry unit, sandwich construction with insulating Polyurethane.
✓ Network	Standard ethernet interface
✓ IPC	According to IPC-Jstd 033C
✓ European Quality	Made in Germany
✓ Maintenance	Easy to service, low maintenance

XSDR 702-24

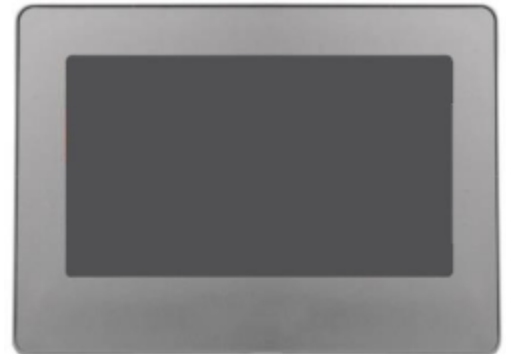
Technical data cabinet

- ✓ External dimensions: (W x H x D) 700 x 1880/2060 x 850 mm
- ✓ Internal dimensions: (W x H x D) 544 x 1504 x 600 mm
- ✓ Weight: 135 kg
- ✓ Weight on shelf: 50 kg
- ✓ Shelves (WxD): 5 pcs, 535 x 550 mm.
- ✓ Volume: 490 L
- ✓ Electric supply: 230 VAC (120 VAC optional)
- ✓ Power consumption: 450 W/h (60° C)
- ✓ Protection class: Class 1, hard grounded
- ✓ Humidity level cabinet: ≤1% RH can be reached with drying unit U-2000
- ✓ Sensor accuracy: +/- 0,8 % RH, +/- 0,3°C
- ✓ Temperature accuracy: 60° C, +/- 2° C

Technical data type 4 display

Settings

- ✓ Language Menu
- ✓ Nominal Value Humidity
- ✓ Humidity Alarm
- ✓ Delay Humidity Alarm
- ✓ Nominal Value Temperature (in combination with heater)
- ✓ Temperature Alarm (in combination with heater)
- ✓ Delay Temperature Alarm (in combination with heater)
- ✓ Sensor Offset
- ✓ Password Protection
- ✓ Floor Lifetime Reset Timer
- ✓ Manual Regeneration



Display

- ✓ Supply voltage (supplied by drying unit) 24 VAC/DC, 350 mA
- ✓ Input Touchscreen
- ✓ TFT Color LCD 4,3"
- ✓ Controllable Brightness
- ✓ Ethernet connection

XSDR 702-24

Technical data Rotronic sensor HC2A-S



Based on the Airchip 3000 Technology use the HygroClip 2 probes can be used for control of temperature and humidity.

The HygroClip 2 probes can be configured with the ROTRONIC HW4 software and share the following features:

- ✓ Measurement of relative humidity and temperature.
- ✓ Programmable automatic sensor test with failsafe mode and sensor drift compensation.

Technical data dry-unit U-2000 series

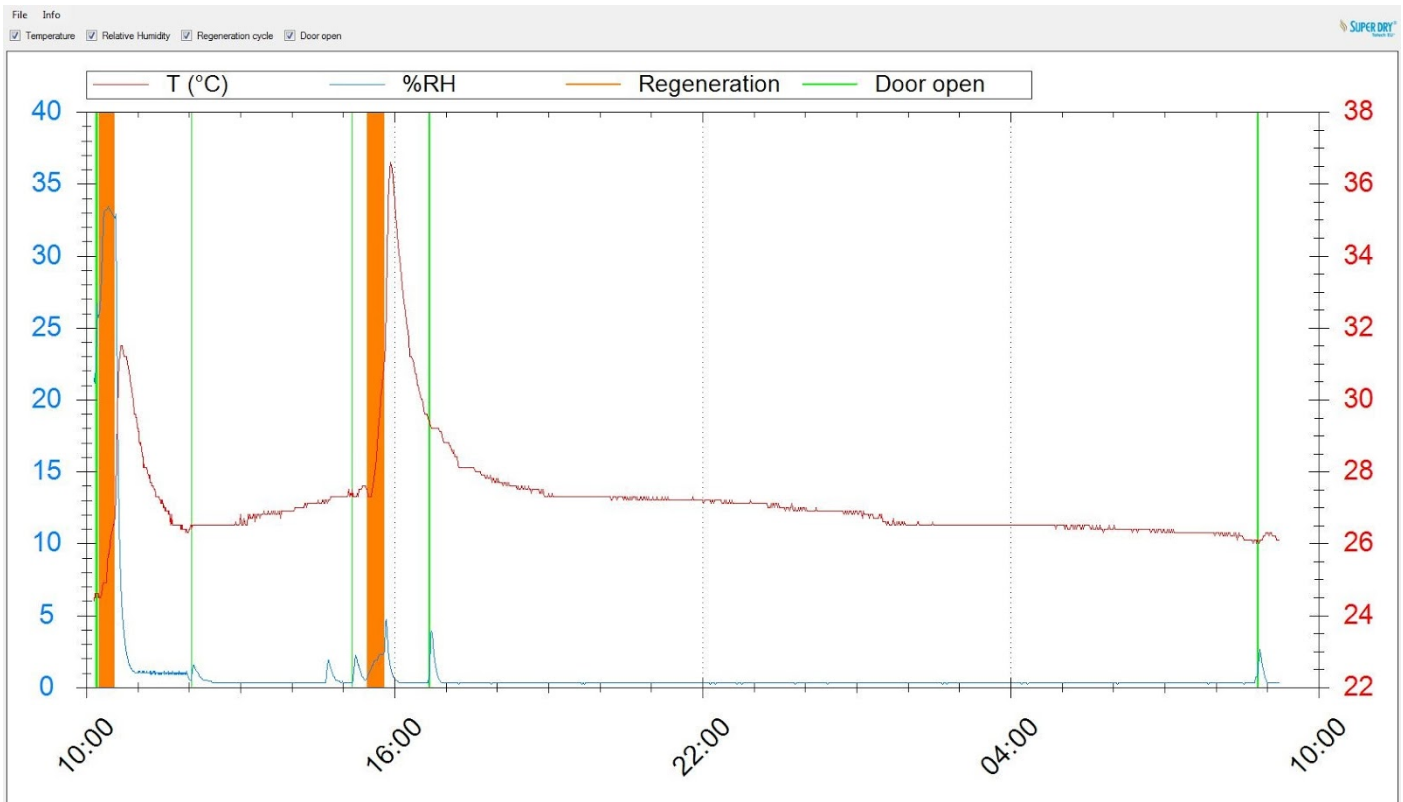
- ✓ Control: Adjustable with control panel type 4
- ✓ Dehumidifying Temperature: 10 – 60° C
- ✓ Electric supply: 230 VAC (120 VAC optional)
- ✓ Dimensions (L x B x H): 260 x 380 x 100 mm
- ✓ Weight: 8,1 kg

XSDR 702-24

Free Totech viewer

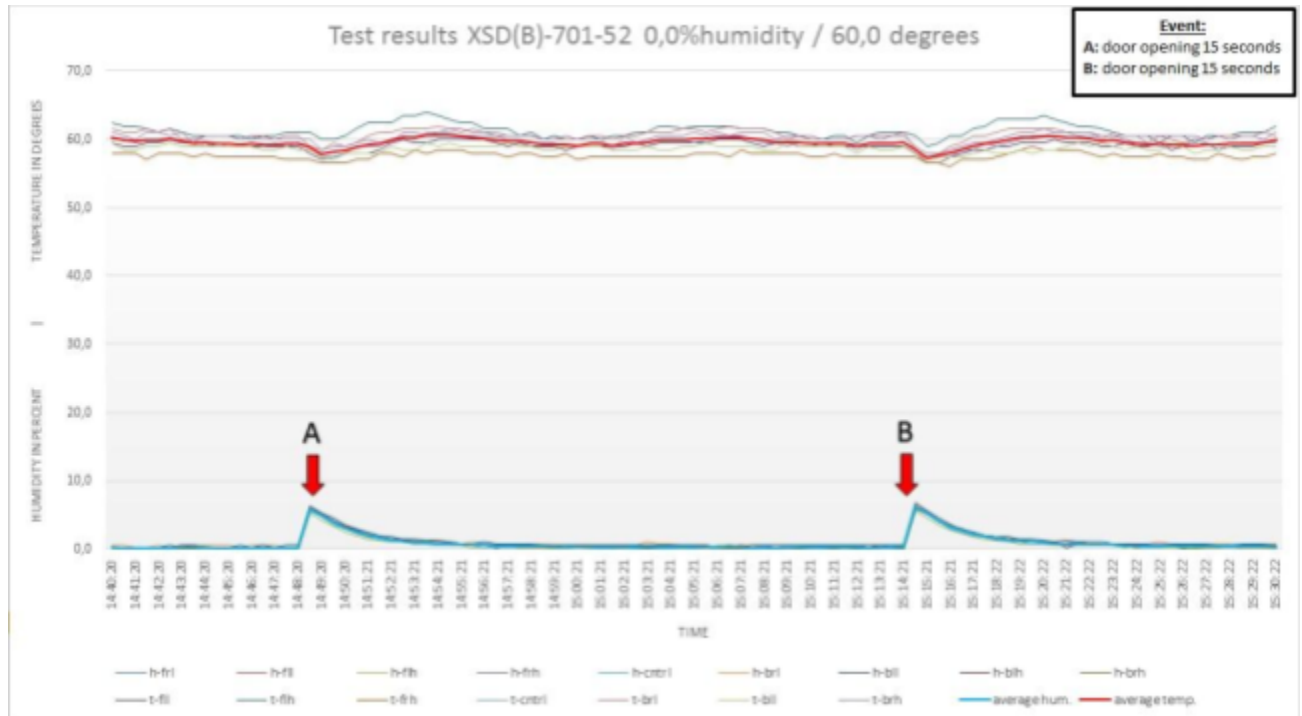
- ✓ Writing of climate data, door openings and alarms to SD card
- ✓ Transfer data through Ethernet to PC (history data)
- ✓ User-friendly display of all relevant data
- ✓ Data processing in MS-Excel

- ✓ Seamless documentation
- ✓ Excellent process safety



XSDR 702-24

Performance test



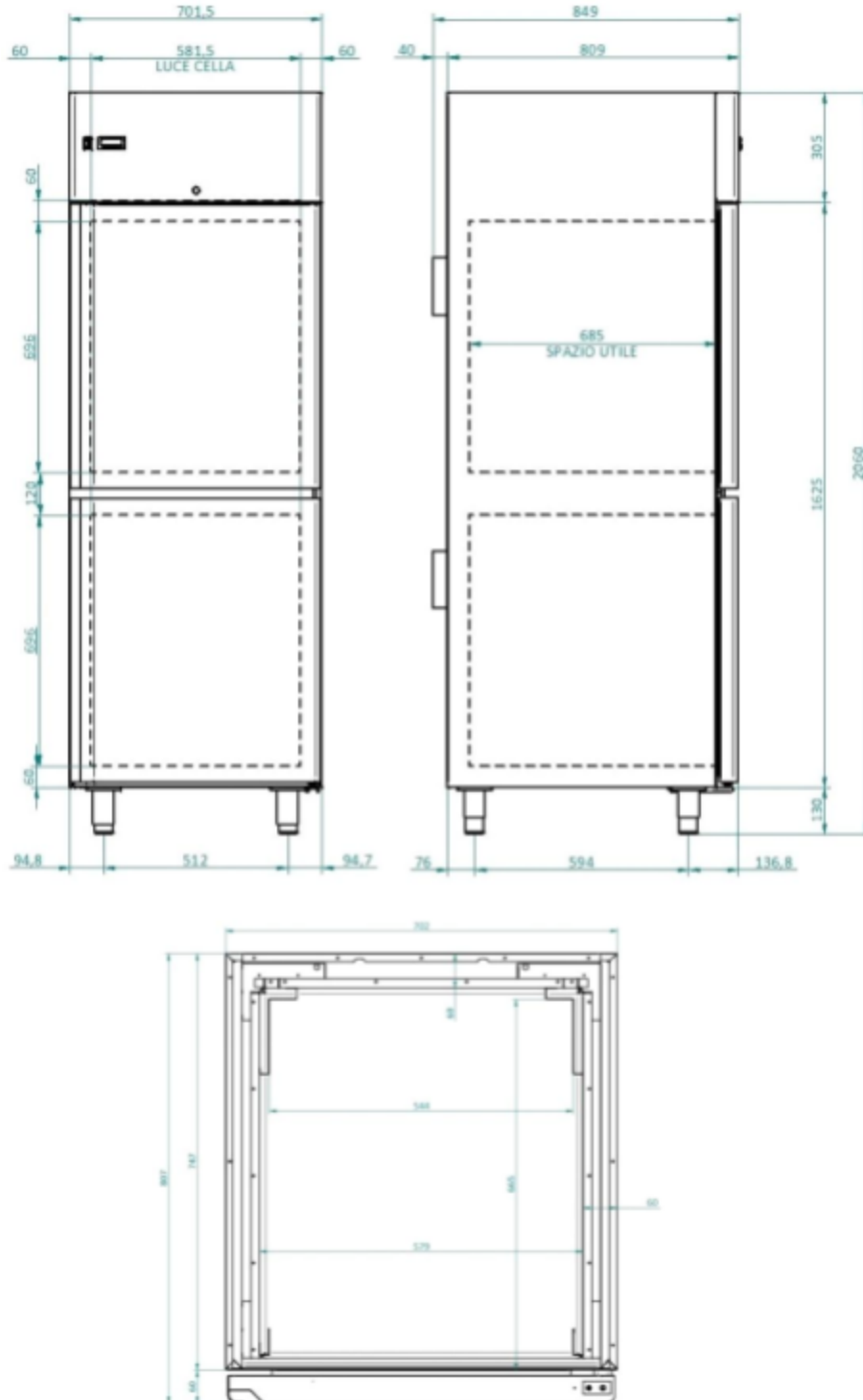
Test conditions

- ✓ Type of dew point sensor: 9x Hygroclip HC2A-S
- ✓ Accuracy of dew point sensor: $\pm 0,3^\circ \text{C}$ at $+ 20^\circ \text{C}$ ($+ 68^\circ \text{F}$)
- ✓ Location of sensors: Every corner + center
- ✓ Ambient conditions: Hum. $50 \pm 5\% \text{ rH}$, $22^\circ \text{C} \pm 2^\circ \text{C}$, Pressure $994 \pm 20 \text{ hPa}$
- ✓ Dooropenings: 2 door openings, 15 sec.

For more detailed test results, please refer to our website.

XSDR 702-24

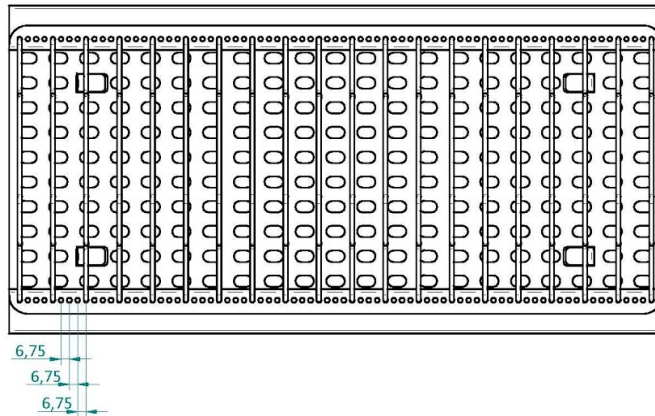
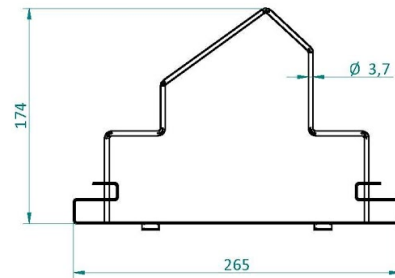
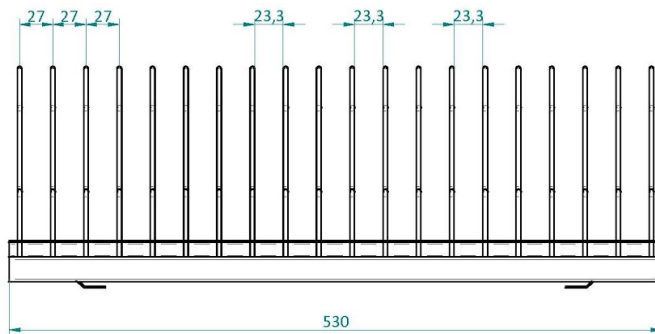
Technical drawings



Dimensions mentioned in mm.

XSDR 702-24

Technical drawings



XSDR 702-24

Options



SMD Reel rack with reel supports

L x W = 530 x 265 mm incl. 18 reel supports.

Item number 20014005



Reel support

Additional reel supports for 20014005.

Item number 20014201



Humidity alarm signal lamp

Two-color (orange/green or red/green), magnetically fixed, providing optical signals on operational states and exceeded limit values. Indicates for both compartments. Operates on 24V.

Item number 20016037



Additional sliding shelves

Stainless steel sliding shelf on metal rollers, 100% extractable

Item number 47000141



Hygroclip 2

Probe with maximum accuracy for all climate measurements.

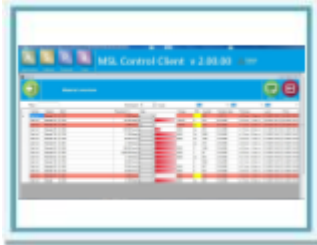
Item number 47000027

Exchange calibrated sensor:

Item number 47000040

XSDR 702-24

Options



MSL 2.0 software for 1000 components

Software solution for the monitoring of moisture sensitive components and their MSL states during storage and processing in the production. The exact drying state individually for each component is monitored and displayed with the software. One of the possibilities is that it can read out multiple HC2A-S sensors. To adjust storage conditions, picking of stock, removal of used parts and more stock control. A complete history for each component is traceable up to the full processing. The evaluation of the drying conditions is based on the requirements of the IPC / JEDEC J-STD-033B1 directive.

Item number 20010036



MSL software upgrade with additional 1000 components

Upgrade to monitor an additional 1000 components

Item number 200174502



Totech Monitor software

Realtme cabinet monitoring with alarm function, sending e-mails with detailed information on the status of the cabinet. History data files with graphical overview

Item number 47000583